

SUPPORTING OUR TROOPS FOR OVER 60 YEARS

As a Woman Owned Small Business, Applied Companies has established itself as the industry leader in the manufacturing of specialized mobile environmental control systems (ECSs) for commercial, aerospace, and military markets. A strong customer focus, unique engineering solutions, and a sophisticated production management system have earned Applied Companies products a reputation for reliability and performance.

With capacities ranging from 0.25 to 200 tons in the form of an ECU or chiller, our systems can be found operating from the deserts of Africa to the tundra of Alaska. Our products are designed to meet a wide range of operating requirements, including temperature extremes (-40°F to 140°F), high altitudes, extreme humidity, explosive or hazardous atmospheres, and transport shock and vibration.

CAPABILITIES

- MIL-STD-461 EMI Protection
- MIL-STD-188-125 (1) & (2) Fixed and Mobile HEMP Protection
- MIL-STD-464 Applications
- Thermal/Flow Analysis
- MIL-STD-810 Environments/Mobility
- Precision Temperature Control
- Integrated Power Management
- Automated Controls
- Prototyping
- Custom Enclosure Designs
- Unique Applications

CLASSIFICATIONS

North American Industry Classification System (NAICS)
238220, 332420, 333415, 335312, 336212

Federal Supply Classification (FSC) 4120
Product Service Codes (PSC) 4120, AJ12, AJ15

CAGE CODE: 54080
DUNS: 041689639

CERTIFICATIONS

American Welding Society (AWS)
AWS D17.1/D17.IM:2010
Fusion Welding for Aerospace Application
AWS D1.2/D1.2M 2008
Structural Welding Code - Aluminum

ISO 9001:2015
DOT Certified Products
ASME 31.3-2018 Pressure Piping
Cyber Security Maturing Model Certification
(CMMC) Level 2 Compliant
Level 3 In Progress

Proudly Built in the USA



CONTACT US

CALIFORNIA HEADQUARTERS

28020 Avenue Stanford
Valencia, CA 91355

Info@AppliedCompanies.net

INTEGRATED PRODUCT SUPPORT FACILITY

4820 Commercial Dr. NW
Huntsville, AL 35816

800 • 799 • 6194

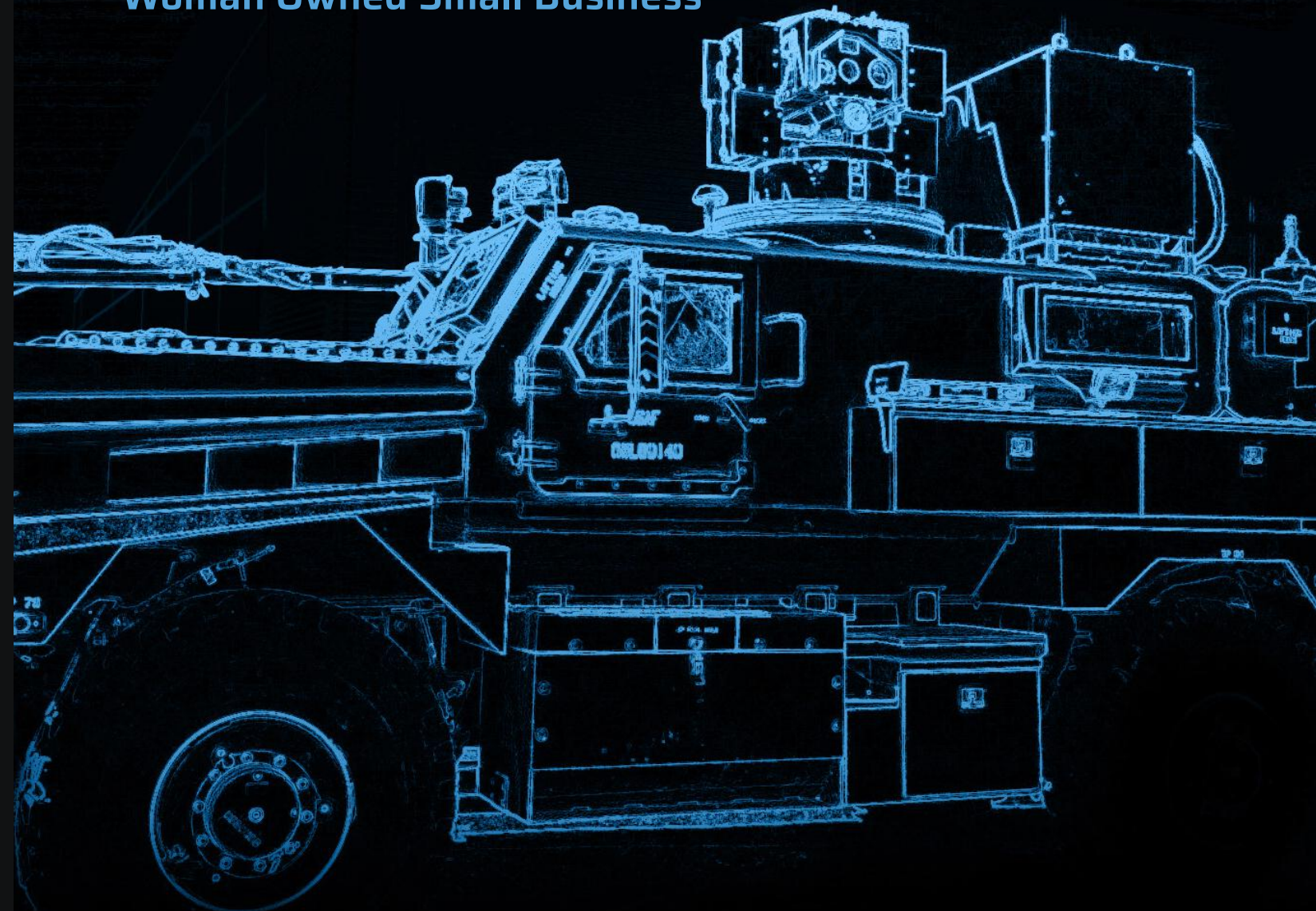
www.AppliedCompanies.net



Publication Date: 2024-03-01



Woman Owned Small Business



DIRECTED ENERGY

Thermal Management for Directed Energy Systems

- Total Heat of Rejection: 9.5kW
- Control: RS-422
- Max. Design Temp: 140°F
- Supply Coolant Temp: +20°F
- Operating Voltage: 28VDC



2008

AVENGER

- Total Heat of Rejection: 24,000 BTU/HR
- Control: Automatic Electro-Mechanical
- Max. Design Temp: 120°F
- Type: Forced Air Cooling/ Heating/Dehumidification
- Operating Voltage: 208VAC, 3ph, 60Hz



2011

MSALTS

- Total Heat of Rejection: 30kW
- Control: Ethernet TCP/IP
- Max. Design Temp: 120°F
- Supply Coolant Temp: -1°C to 18°C
- Operating Voltage: 208VAC, 3ph, 60Hz



2012

HEL-TD

- Total Heat of Rejection: Undisclosed
- Control: Undisclosed
- Max. Design Temp: 130°F
- Supply Coolant Temp: Undisclosed
- Operating Voltage: 28VDC & 40VDC



2021

RADBO

SILENT GUARDIAN

2011



- Total Heat of Rejection: 9.5kW
- Control: Modbus
- Max. Design Temp: 125°F
- Supply Coolant Temp: +20°F
- Operating Voltage: 208VAC, 3ph, 60Hz

MAN-PACK CHILLER

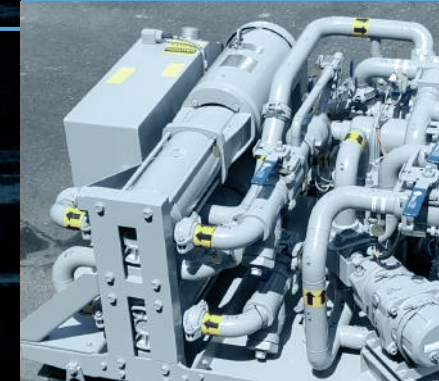
2012



- Total Heat of Rejection: 7kW
- Control: Automatic Electro-Mechanical
- Max. Design Temp: 122°F
- Supply Coolant Temp: 20°C +/- 3°C
- Operating Voltage: 120VAC, 1ph, 60Hz

SHIP-BASED CHILLER

2017



- Total Heat of Rejection: 33kW
- Control: Ethernet TCP/IP
- Max. Design Temp: 122°F
- Supply Coolant Temp: 17°C +/- 1°C
- Operating Voltage: 440VAC, 3ph, 60Hz

SHIP-BASED CHILLER

2022



- Total Heat of Rejection: 46,000 BTU/HR
- Control: Integrated PLC & HMI
- Max. Design Temp: 122°F
- Supply Coolant Temp: 41°F to 59°F
- Operating Voltage: 208VAC, 3ph, 60Hz